



Leicestershire
Police
Protecting our communities

Burbage Newsletter

February 2020

News



<https://www.leics.police.uk/report-online>

The new Police website and online reporting portal www.leics.police.uk

Thefts and attempt thefts of high value motor vehicles

We have seen a reduction in vehicle thefts this month but please continue to be mindful of this due to our location to the motorway. I have been doing some work with residents around CCTV and crime prevention. We have also been working on intelligence given to us by local residents when suspicious vehicles have been seen in the area. We are continuing our targeted patrols and working on catching these criminals.

Neighbourhood watch

More and more areas are forming neighbourhood watch groups. The benefit of these are fantastic. Residents say they feel safer and it helps build relations with each other. They also help reduce crime in the area as people become more security conscious. I keep in contact with the admins of the groups so can easily pass on any immediate concerns in the area. Please remember to report crime and suspicious activity through the correct lines via 101 as this gives us an opportunity to respond to activity. If you have a group please contact me so I can keep you informed when we have issues with crime.

Anti-Social Behaviour

Again this month I have completed around 6 home visits to a group of youths engaging in this activity. Hopefully our visit and support from their parents, this type of behaviour will stop. We continue to work on and identify youths by working with schools/residents and businesses.

Neighbourhood Link – Have you signed up?

We want to encourage as many people as possible to sign up to our community messaging system, Neighbourhood Link. You will receive regular emails keeping you up to date about local policing issues, good news stories, crime prevention advice, witness appeals and local events.

It is very easy to do and free! Register at www.neighbourhoodlink.co.uk



Quick Stat

Vehicle thefts/attempt in Burbage this month **2 thefts, 2 attempts, 5 incidents of theft from vehicles. Residential burglaries/attempt this month 5** (homes get targeted for jewellery and money if the property looks un-occupied)

<https://www.police.uk/leicestershire/NH28/>

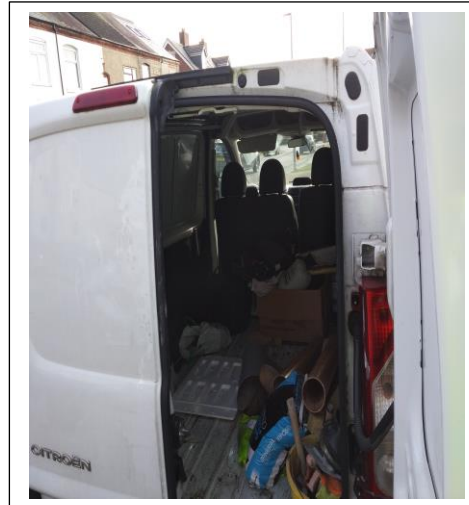
*Jewellery is the target item (think prevention)

This month's events

This month we held a crime prevention event at the Millennium hall. The turnout was fantastic and we had some really useful conversations with people. The event was attended by our neighbourhood watch coordinator and a local lock smith. We supported with crime prevention products and discussed a range of issues from parking, speeding, car crime and burglary. I have also completed some follow up work that was generated from the event. This included some home security visits and working with local businesses.



Work completed on theft of tools, warning motorists around clearing ice from windows, patrols in the area and the crime prevention event.



Your Beat Team

We are always happy to hear from you. Please email us at hinckleyandblaby.npa@leicestershire.pnn.police.uk or call 101.

Sergeant Lucas

PC Ian Edwards

PCSO Darren Stretton

